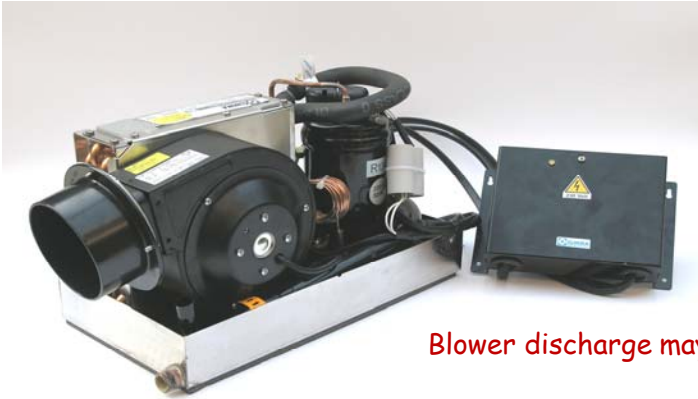


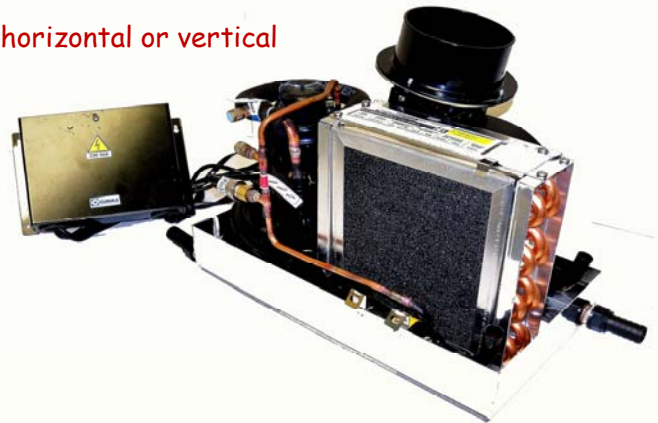
Compact 4.2 - Cool Only with Vega MK III Control



Blower discharge may be horizontal or vertical

12v DC Compatible!

Only 25-35 amps **total**, including pump, when operated from a 12v power source through an inverter. Can be used overnight on batteries. Ideal for Cuddy Cabins; V-Berths; Dashboard Helm Cooler; Facial-Frigidizer; etc.



Versatile, powerful, and quiet 4,200 Btu high-efficiency marine air conditioner
 Highest quality construction from Europe's leader in marine air conditioning
 Stainless steel base, pan and brackets for long life in the harsh marine environment
 Extra-deep condensate pan to minimize spillage, with twin scavenging condensate drains
 High efficiency Toshiba compressor for exceptionally low running and starting current
 Unique horizontal condenser with exceptional heat transfer characteristics
 Triple-pass tube-and-fin evaporator to ensure highest possible heat and moisture removal
 Quiet but powerful 110 CFM variable speed centrifugal blower for maximum cooling
 Right hand blower discharge. Can be changed from horizontal to vertical orientation
 Eight manual blower speeds plus Automatic, electronically controlled from Vega MK III
 Pre-charged with precise quantity of refrigerant. No special tools or expertise required
 Uses environmentally friendly and readily available refrigerant, R134a
 Cool only standard. Reverse cycle heat available on request
 Multi-function, user friendly Vega MK III digital control standard
 Auto, Dehumidify, and Defrost modes selectable on Vega MK III control
 Exceptionally low current draw - Can be powered from batteries through a 700w inverter
 DC pump option available. Installs above or below waterline and can share an existing intake
 Ducting and grille kits available on request
 Air intake filter removes easily and quickly for routine cleaning

Distributed in North America by:



Annapolis Md. USA

Compact 4.2 - Technical Data

Installation Requirements

Supply and Return Air Grilles

Discharge grille(s) - Min 12 sq inch
Return air grille - Min 20 sq inch

Ducting

4" diameter blower discharge

Water Pump

Minimum 1.0 GPM
Recommended - Flo-Jet 12v

Water Hose

Intake and discharge - 5/8" diameter
Condensate - 1/2" or 5/8" diameter

Circuit Breaker - 115v

10 amp magnetic/thermal breaker

Power Supply Wire - 115v

Minimum 16 AWG



Capacity

Nominal capacity @ABYC standard conditions
Cooling capability - below decks

4,200 Btu/hr

300 cu ft free air space - Cuddy cabin or v-berth

Dimensions

Compact 4.2 15" w x 8"d x 9.5"h
Vega MK III 5" w x 2.5" h

Other Data

Power Supply 115v, 60 Hz, 3.5 amp
Power draw average 450 Watts
Inverter reqd. Min 700 watt
(Pure sine wave)
Weight 26 pounds
Part Number MC35KCOI

